

TECHNICAL DATA SPECIFICATION OF SOSLIME

ABOUT SOSLIME (SNAIL SECRETION FILTRATE OR SNAIL MUCIN)

What is SOSLIME?

Soslime is a unique brand of snail secretion filtrate from ValorAfrica BioIndustry. Soslime is a high protein resource mined cruelty-free from snails with great benefits to both hair and skin health. It is a clear amber liquid that contains **a large amount of amino acids, antimicrobial peptides, natural hyaluronic acid, bioactives and a mucopolysaccharide** which makes it useful in cosmeceutical manufacturing. Snail secretion filtrate plays crucial role in **skin collagen building, skin & hair hydration, wound healing, anti-inflammatory and antimicrobial activities**. It is produced from our sustainable technology which ensures cruelty-free after extraction. The process begins with a thorough cleaning of snails using a sanitizing clean water before slime is being extracted at well controlled temperature, humidity and pH semi-closed chambers. It is further treated with a cold-system pathogenic treatment process before being stored for shipment. Soslime is very tolerable with other skincare resources and incorporated into many water-based products.

GENERAL ACTIVE PRESENT IN SOSLIME

1) Amino Acids 2) Antimicrobial Peptides 3) Copper Peptides 4) Elastin 5) Mucopolysaccharide 6) Natural Hyaluronic acid 7) Antioxidant, Anti-tumour and Anti-inflammatory compounds

GENERAL PROPERTIES

- 18 Amino Acids, with 8 amino acids for Skin Health.
- Bioactives, for additional Anti-microbial effects and protection.
- Peptides, for Anti-microbial, skin and other tissue regeneration.
- Naturally occurring Hyaluronic acid, for collagen building.
- Copper Peptides, Elastin & Hyaluronic acid for healthy hair growth.
- Naturally Occurring Organic Acids for slushing off dead skin cells
- High Purity and longer storage of **Soslime**

SPECIFICATION OF SOSLIME

Product Owner Details:

Product name: Soslime

Grade: Pharmaceutical

Producer: ValorAfrica BioIndustry

Location: Umuguma/Irete road, Owerri, Imo state, Nigeria (460117)

Product Trace:

Product is slime harvested and filtered from African giant land snail (GALS)

Snail species used: Archachatina Marginata &/or Achatina Fulica

Slime extraction Process: Cruelty-free

Physical Characteristics

Below physical properties are evaluated at temperature between 9°C and 37°C

Specific Gravity: 1.1 to 1.18

PH: 3.9 – 4.5

Colour: Amber

Solubility: Soluble in water

Smell: Characteristic (Not pungent or Artificial)

TDS: 708- 800

Treatment: Ultrafiltration (0.5 micron), Cold-system pathogenic treatment & Preservative addition

Preservatives Used:

. Gluconic acid . E202

Amino Acids Present:

Below is a typical highlight on amino acid profiling of Soslime using HPLC in g/100g

CASE 1: 8Kg of Snails Used for Extraction**TABLE READING**

Analysis Method : C:\HPCHEM\1\METHODS\AMINO ACID PROFILE

Last changed : 18/07/2023 8:59:24 PM

AMINO ACID ANALYSIS

=====

External Standard Report

=====

Sorted By : Retention Time

Calib. Data Modified : 18/07/2023 8:51:03 PM

Multiplier : 1.0000

Dilution : 1.0000

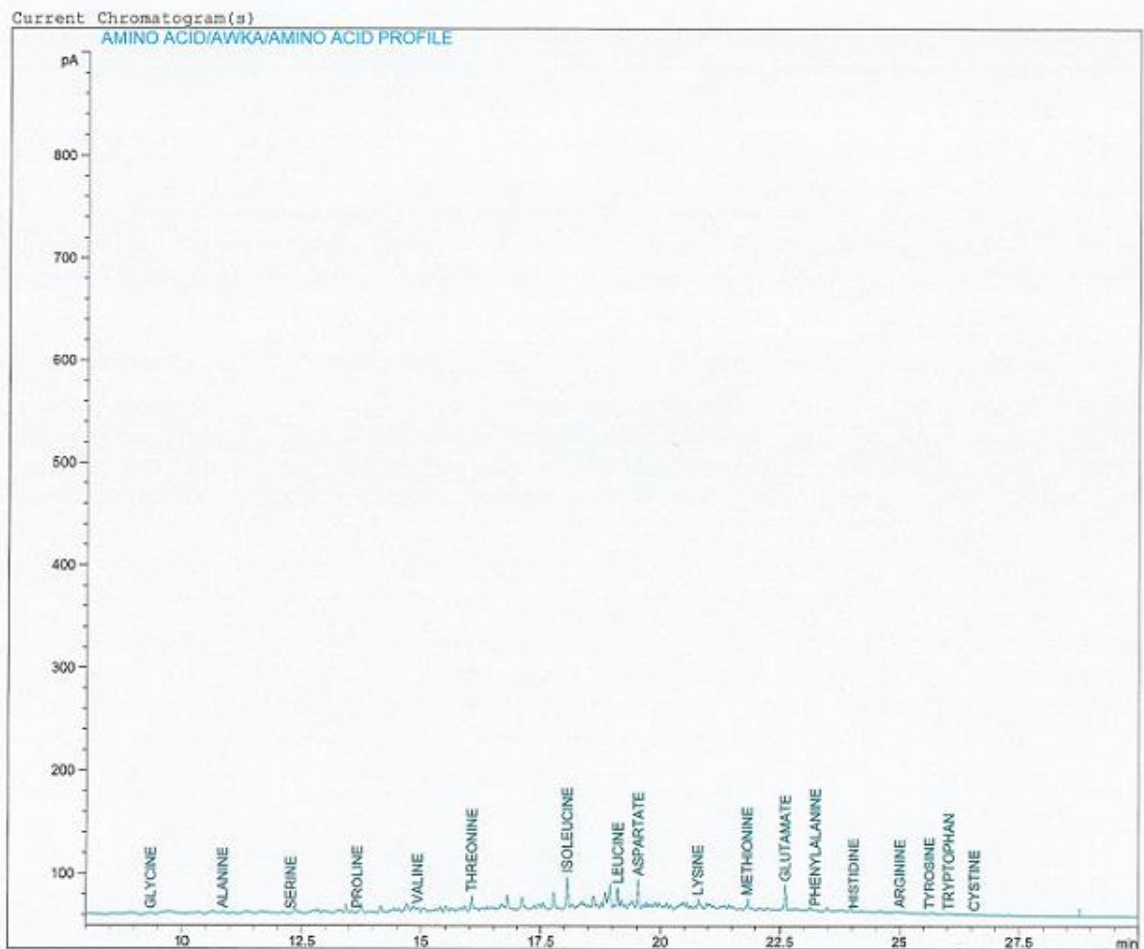
Signal 1: PFPD1 A,

RetTime [min]	Sig	Type	Area [pA*s]	Amt/Area	Amount g/100gProt	Grp	Name
8.934	1	BV T	10.31367	3.75696e-1	3.87481		GLYCINE
10.850	1	VV T	2.90278	1.40097	4.06670		ALANINE
12.267	1	VV T	8.73285	5.53485e-1	4.83350		SERINE
13.739	1	VV T	9.81203	3.98216e-1	3.90730		PROLINE
14.695	1	VV T	13.28943	3.56953e-1	4.74371		VALINE
16.035	1	VV T	20.27862	2.10919e-1	4.27714		THREONINE
17.222	1	VV T	2.43432e-1	18.42436	4.48507		ISOLEUCINE
18.049	1	BV T	76.52931	9.72092e-2	7.43935		LEUCINE
19.515	1	VV T	75.07379	1.62590e-1	12.20628		ASPARTATE
20.714	1	VV T	5.91253	1.06156	6.27649		LYSINE
21.675	1	VV T	1.28356e-1	12.01568	1.54229		METHIONINE
22.596	1	VV X	59.85448	2.45486e-1	14.69341		GLUTAMATE
23.227	1	VV X	10.66480	4.81933e-1	5.13972		PHENYLALANINE
23.963	1	VV X	21.53234	1.34150e-1	2.88856		HISTIDINE
25.108	1	VV X	7.39813	7.64928e-1	5.65904		ARGININE
25.616	1	VV X	4.82452	6.15597e-1	2.96996		TYROSINE
26.227	1	VV X	9.91440e-1	1.24721	1.23653		TRYPTOPHAN
26.947	1	VV X	2.72249	5.27685e-1	1.43662		CYSTINE
Totals :					91.67649		

Results obtained with enhanced integrator!

CHROMATOGRAM

Print of window 38: Current Chromatogram(s)



CASE 2: 10Kg of Snails Used for Extraction

TABLE READING

Analysis Method : C:\HPCHEM\1\METHODS\AMINO ACID
 Last changed : 28/08/2023 8:45:34 PM
 AMINO ACID ANALYSIS

External Standard Report

Sorted By : Retention Time
 Calib. Data Modified : 28/8/2023 8:44:29 PM
 Multiplier : 1.0000
 Dilution : 1.0000

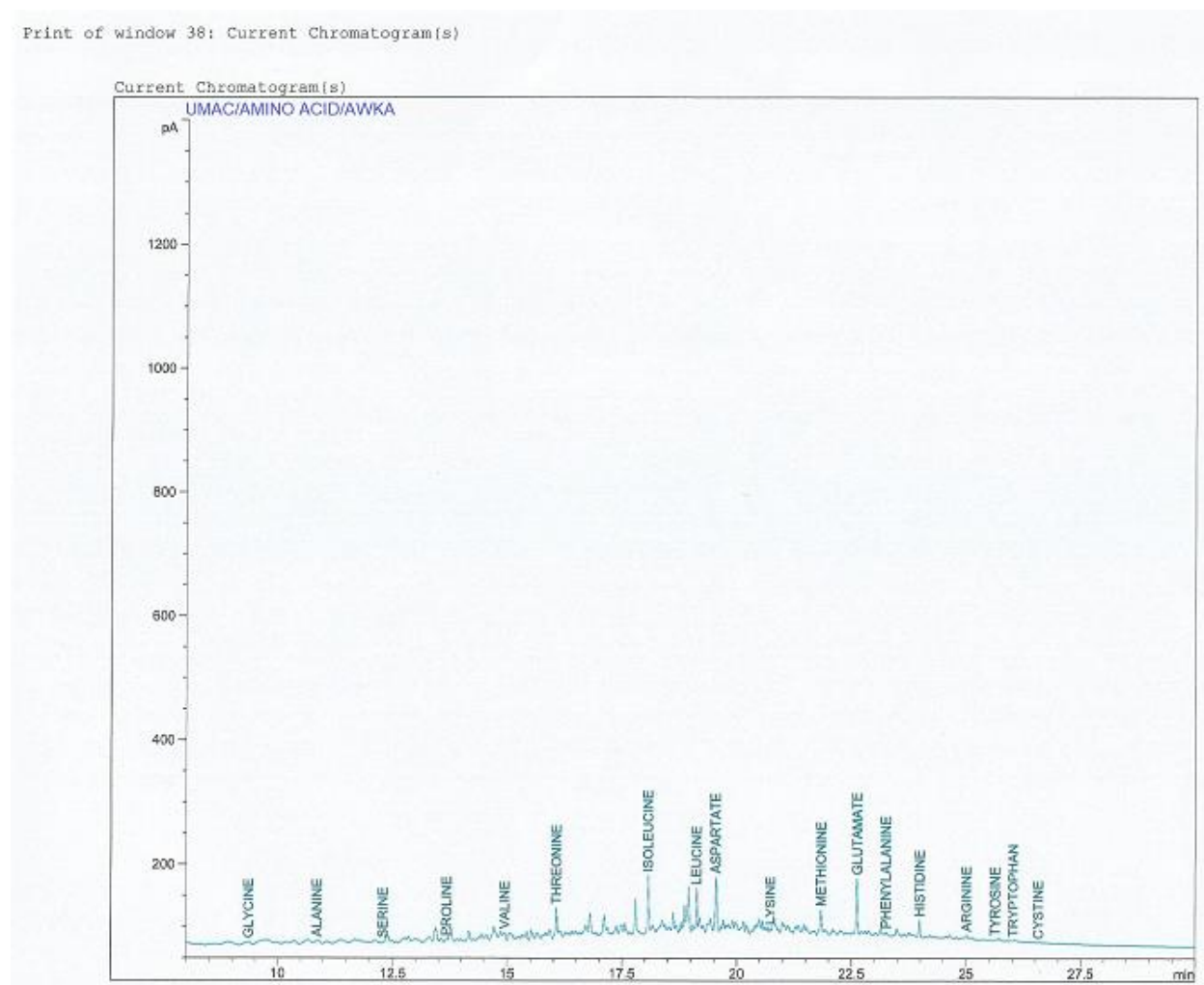
Signal 1: PFPD1 A,

RetTime [min]	Sig	Type	Area [pA*s]	Amt/Area	Amount g/100g of P	Grp	Name
8.927	1	VV T	61.59305	6.56486e-2	4.04350	1	GLYCINE
10.856	1	VV T	42.95595	9.82709e-2	4.22132	1	ALANINE
12.278	1	VV T	27.92109	1.95825e-1	5.46763	1	SERINE
13.668	1	VV T	26.74275	1.50805e-1	4.03293	1	PROLINE
14.932	1	VV T	2.79354	1.88378	5.26242	1	VALINE
16.255	1	VV T	3.84773	1.13458	4.36555	1	THREONINE
17.103	1	VV T	80.79362	5.98189e-2	4.83299	1	ISOLEUCINE
18.066	1	BV X	238.90280	3.25651e-2	7.77988	1	LEUCINE
19.532	1	VV X	278.60550	4.34267e-2	12.09891	1	ASPARTATE
20.603	1	VV X	57.51418	1.09804e-1	6.31530	1	LYSINE
21.831	1	VV X	195.59532	8.10891e-3	1.58606	1	METHIONINE
22.614	1	VV X	280.54953	5.42897e-2	15.23094	1	GLUTAMATE
23.238	1	VV X	86.15984	6.20334e-2	5.34479	1	PHENYLALANINE
24.099	1	VV X	55.05953	5.36749e-2	2.95532	1	HISTIDINE
25.007	1	VV X	80.15856	7.79273e-2	6.24654	1	ARGININE
25.625	1	VV X	30.05735	9.92126e-2	2.98207	1	TYROSINE
26.141	1	VV X	16.74485	7.05456e-2	1.18128	1	TRYPTOPHAN
26.558	1	VV X	7.47381	1.64225e-1	1.22739	1	CYSTINE

Totals : 95.17482

Results obtained with enhanced integrator!

CHROMATOGRAM



Bioactive Compounds Present:

Below are some identified consistent chemical compounds in Soslime using the GCMS method:

GCMS PARAMETER

Parameters	Values
Name	Agilent 19091S-433UI, HP-5ms Ultra Inert
Extraction fluid	N-hexane
Carrier gas	Helium
Flow of gas	0.97414 mL/min
Holdup Time	1.39min
Average Velocity	35.97 cm/sec

SOME* COMPOUNDS PRESENT AND CONSISTENT

Compounds	Activities	Peak Area
n-Nonadecane	Antimutagenic	4.55
1-METHYL-3-PROPYLBENZENE	Antioxidant, anticancer, antibacterial	2.42
9-Octadecenoic acid	Anti-inflammatory, Anti-alopecic, Anemiagenic, 5 reductase inhibitor, α -reductase inhibitor lubricant, Antitumor.	13.39
n-Hexadecanoic acid	Lubricant, antiandrogen, antioxidant, 5- alpha-reductase inhibitor.12	0.06
Heptane, 2,6-dimethyl	Natural inhibitor against snake venom inflammation. Antibacterial agent for wound healing.	3.59
Decane, 2,5,6-trimethyl-	Bioactive / anticancer	6.46
1,2,3-Trimethylbenzene	Antifungal	12.26
Z-10-Pentadecen-1-ol	Antimicrobial against E.COLI	1.10

*** Implies some other consistent naturally occurring compounds from Soslime have been purposely omitted**

Crude Protein Amount:

9.5% - 10.30% per 0.5g of product.

General Tolerable Storage Temperature:

To ensure product quality is generally maintained and stable, please keep product at temperature between -30 degrees centigrade to +65 degrees centigrade.

Dosage:

Can be used up to 96% of overall final product formulation.

Heating:

Avoid heating this product. Heating denatures antimicrobial peptides and leads to product losing effectiveness!!

Bacterial/Fungal Load Assay:

Product yields no bacterial growth after 48 hours of culture. No fungal growth after 24 days of culture.

CAS DETAILS:

ITEM	CAS NO
Snail Secretion Filtrate (Snail Slime)	-

Gluconic Acid	526-95-4
Potassium Sorbate	24634-61-5

OTHER DETAILS

- Soslime is best used within two years if stored within temperature of 10 degrees Celsius to 48 degrees Celsius.
- Soslime is denatured at temperature of 70 degrees and above.
- Soslime is produced to a premium quality with international certification already in progress.

